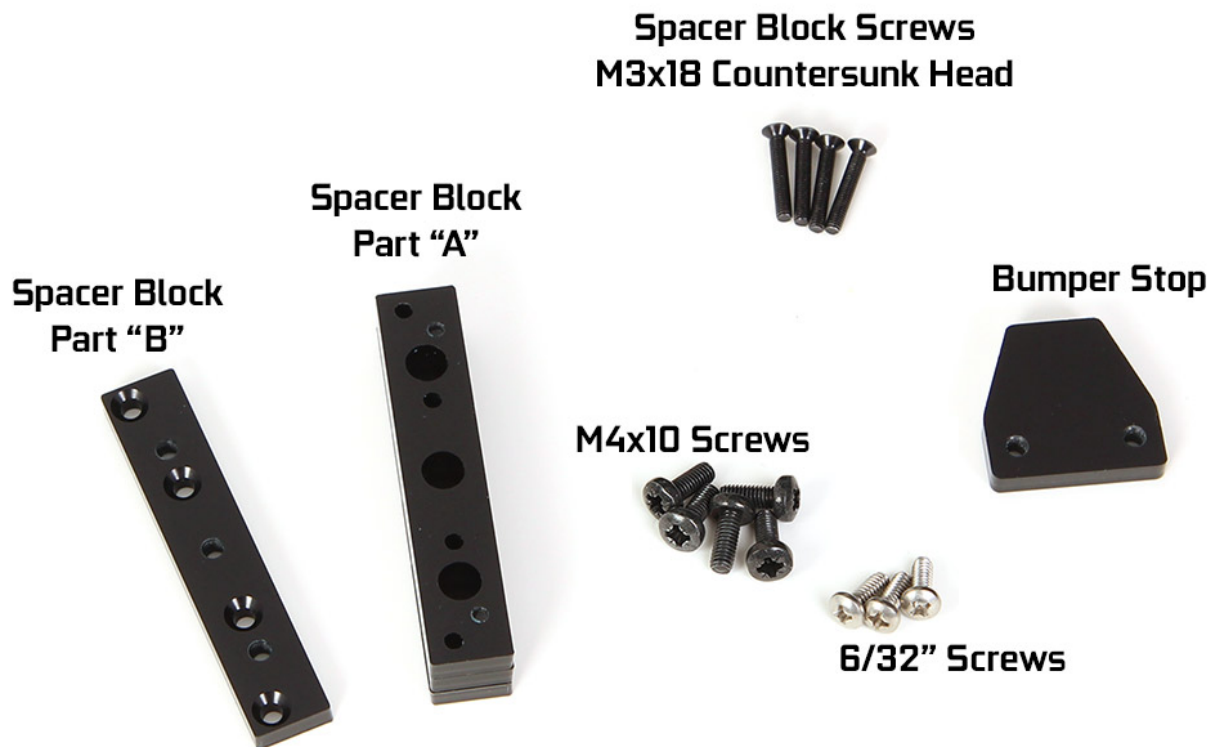




Installation Manual for Gpu Support Brackets Rev.2

Included Accessories:



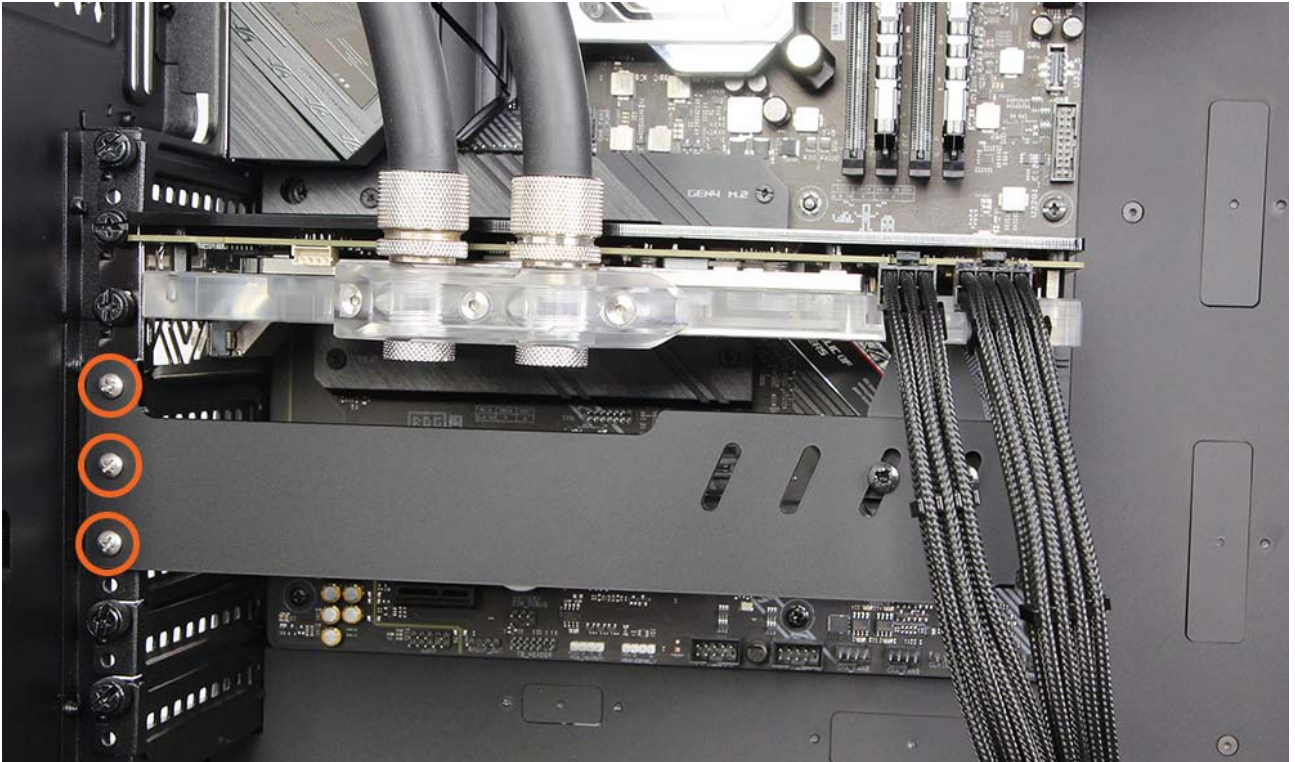
There are two ways to fix the bracket. First is to screw it directly to the Pci Slots, if your card is narrow you can use this option. The second, is to mount it on top of a 20mm spacer block. This will move the bracket closer to the side panel window in case you have a custom pcb card (which are usually quite large)

Option 1 – Mounting Directly to the case:

Step 1: Attach the Bumper Stop to the Bracket, but don't tighten the screws completely, as you will need to adjust its height in a later step of the installation.



Step 2: Fix the bracket to the case using 3x 6/32" screws

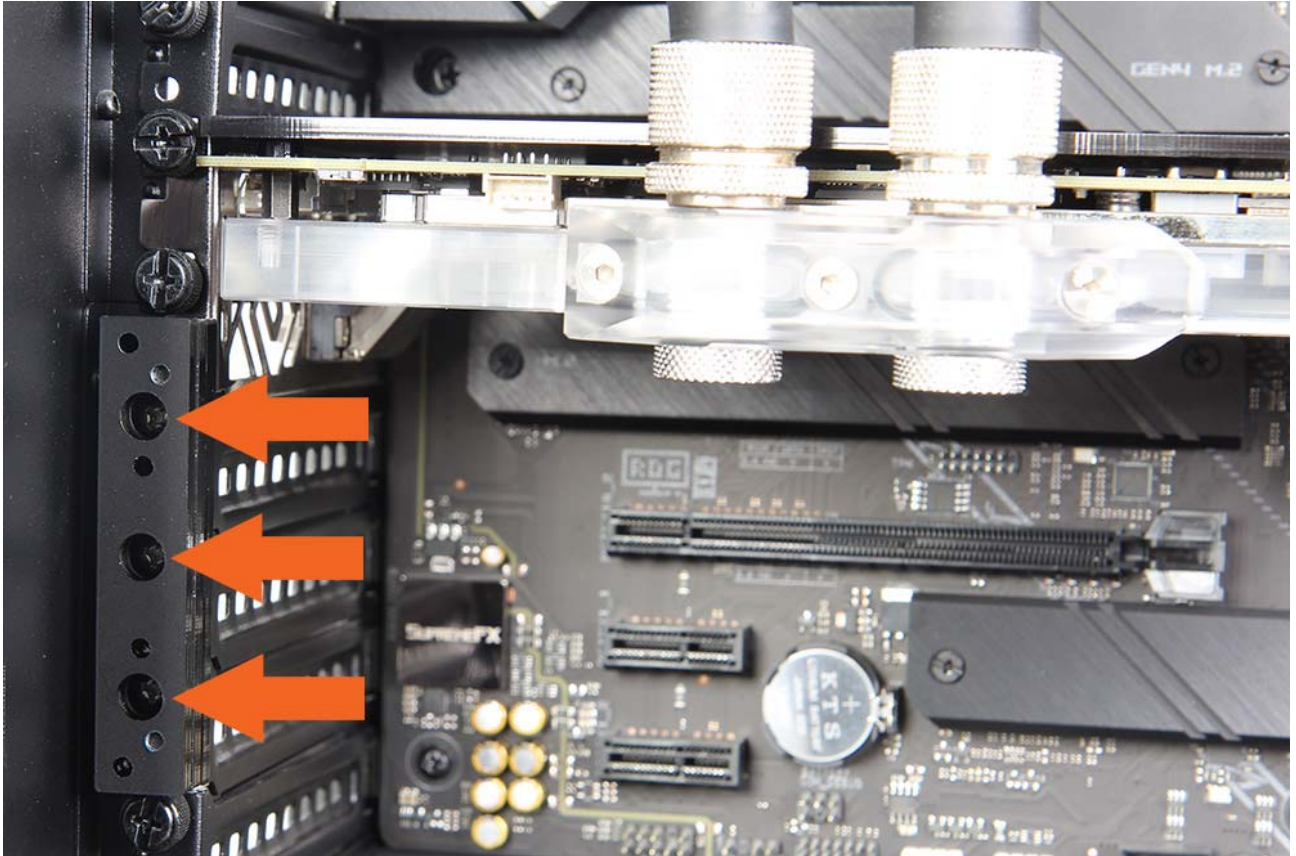


Step 3: Adjust the Bumper Stop height until the card is leveled and tighten the screws.

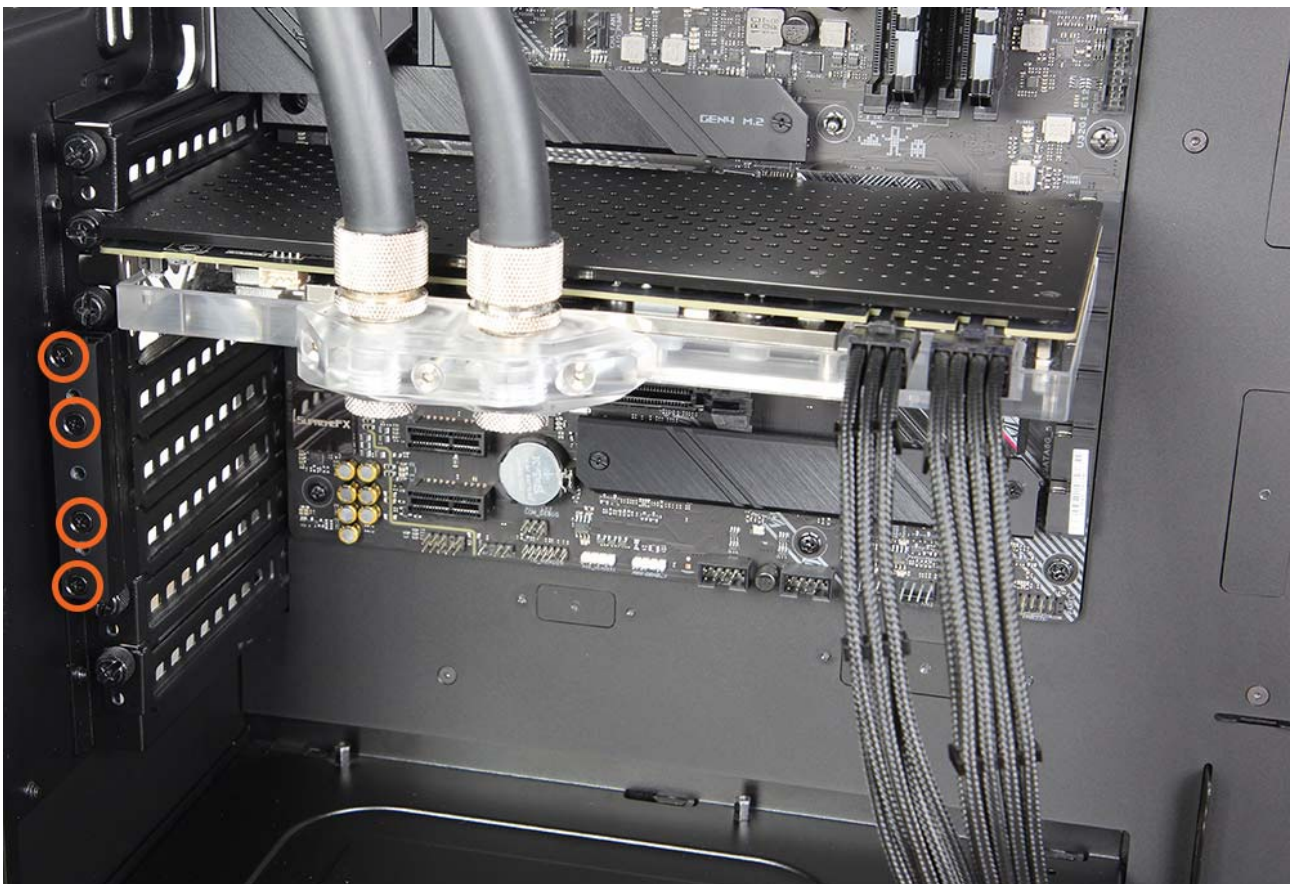


Option 2 – Using the Spacer Block:

Step 1: Fix the Spacer Block Part “A” to the case using 3x 6/32” Screws



Step 2: Fix the Spacer Block Part “B” to the Part “A” using 4x M3x18 Screws



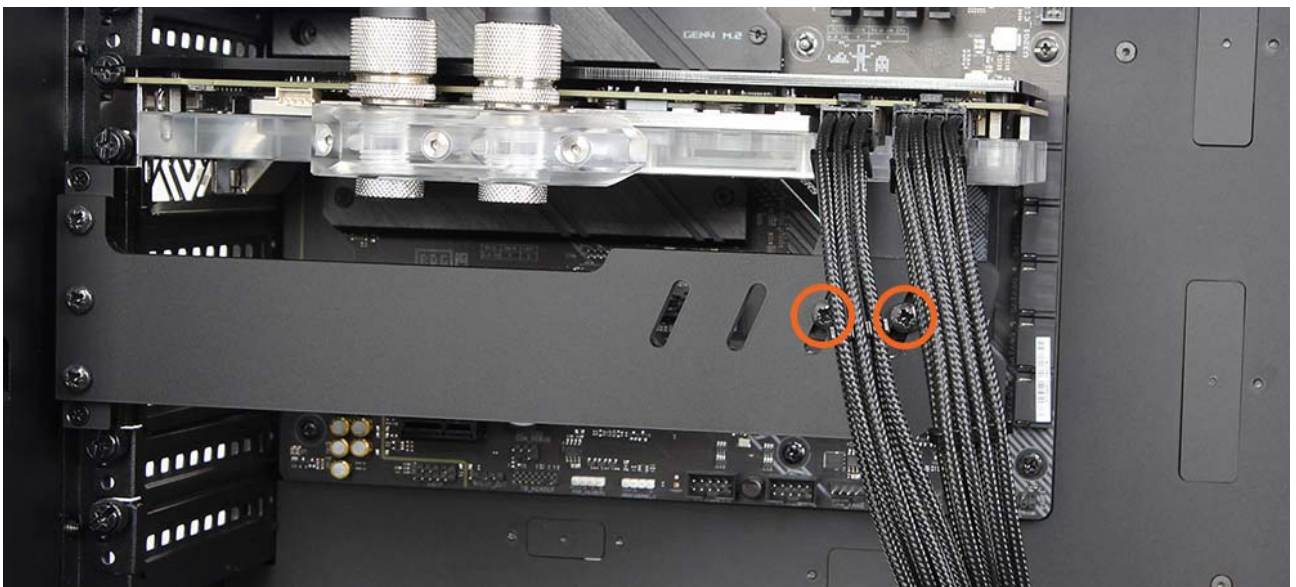
Step 3: Attach the Bumper Stop to the Bracket, but don't tighten the screws completely, as you will need to adjust its height in a later step of the installation.



Step 4: Fix the Bracket to the Spacer Block using 3x M4x10



Step 5: Adjust the Bumper Stop height until the card is leveled and tighten the screws.



If you have further questions/suggestions regarding the installation of the Gpu Support Brackets, please use the contact form in our website at: <https://www.coldzero.eu/contact-us>

Released 19th of April 2022. Rev1.0